

DFGS SERIES

Digital Force Gauge

The CHATILLON® DFGS Series features an integral loadcell for accurate and reliable force measurement in either tension or compression mode. This lightweight, hand-held gauge features RS232 serial data communications and an internal sampling rate of 5000 Hz. Other features include programmable high and low setpoints, pushbutton calibration and an analog output for graphing the force curve. All gauges feature user-selectable force units (oz, lbs, g, kg, N). A large, easy-to-read LCD display indicates current and peak values, gauge settings and gauge status. A selectable auto shutoff feature helps to preserve battery life. Gauges have an accuracy of $\pm 0.15\%$ of full scale ± 1 LSC. Gauges come with accessories, battery charger and carrying case.

FEATURES

- Three Versions
 - Integral Loadcell
 - Dedicated Remote Loadcell
 - Interchangeable Remote Loadcell
- Simple Pushbutton Operation
- Rugged All-Metal Housing
- 5000Hz Sampling Rate
- RS232 Serial Data Communications
- Overload Capacity- 110% of Rated Capacity
- Hand-held or Test Stand Applications

SPECIFICATIONS

Accuracy:	$\pm 0.15\%$ of Full Scale ± 1 LSC
Selectable Units:	lb, kg, N
Overload Capacity:	110% of rated capacity
Display:	LCD, 4-1/2 characters
Sampling:	1000Hz
Outputs:	RS232, Mitutoyo, 12-Pin Hirose
Power:	AC Adapter, NiCd Battery Pack
Accessories:	Carrying Case, Attachments Extension Rod, Battery Charger
Weight:	2 lbs (0.9 kg)
Warranty:	1 Years



DFGS Series with Integral Loadcell

SPECIFICATION
SS-FM-3112-1101
November 2001



Pharmaceuticals



Electronics



Medical Device

INTERNET
www.force-gauge.net

AMETEK and CHATILLON are registered trademarks of AMETEK, Inc.
LLOYD INSTRUMENTS is a trademark of AMETEK, Inc.

Copyright 2000, by AMETEK, Inc.
Printed in U.S.A

Chatillon >K
A registered trademark of AMETEK Inc.

ORDERING INFORMATION

Integral Loadcell Models

Model	Capacity	Model	Capacity	Model	Capacity
DGGS	8 ozf x 0.005 ozf 250 gf x 0.1 gf 2.5 N x 0.001 N	DFGS10	10 lbf x 0.005 lbf 5 kgf x 0.005 kgf 50 N x 0.05 N	DFGS100	100 lbf x 0.05 lbf 50 kgf x 0.05 kgf 500 N x 0.5 N
DFGS2	2 lbf x 0.001 lbf 1 kgf x 0.001 kgf 10 N x 0.01 N	DFGS50	50 lbf x 0.02 lbf 25 kgf x 0.01 kgf 250 N x 0.1 N		

Add "-220V" after the model number if you require 220V operation, e.g. DFGS2-220V.

GAUGE ADAPTERS

Adapters	Capacity	Availability	Part No.	Notes
Chisel Point	100 lbf (500 N)	Standard	SPK-FMG-008A	
Point Adapter	100 lbf (500 N)	Standard	SPK-FMG-009A	
Notch Adapter	100 lbf (500 N)	Standard	SPK-FMG-010A	
Flat Adapter	100 lbf (500 N)	Standard	SPK-FMG-011A	
Hook, #10-32	50 lbf (225 N)	Standard	SPK-FMG-012A	DGGS thru DFGS10
Hook, #10-32	100 lbf (500 N)	Standard	SPK-FMG-012B	DFG50 thru DFGS100
Hook, Swivel, #10-32	20 lbf (112 N)	Optional	ML3867	
Hook, Swivel, #10-32	100 lbf (500 N)	Optional	ML3850	
Hook, Swivel, 5/16-18	500 lbf (2.5 kN)	Optional	ML3868	
Extension Rod, #10-32		Standard	SPK-FMG-013A	
Adapter, #10-32F to 5/16-18M		Optional	P-10020	Required for 5/16 Fixtures
Coupling, #10-32 to 6M		Optional	NC002652	For metric probes/grips



Chisel Point



Point Adapter



Notch Adapter
(Only one included with gauge)



Flat Adapter



Hook
(Only one included with gauge)

STANDARD ACCESSORIES

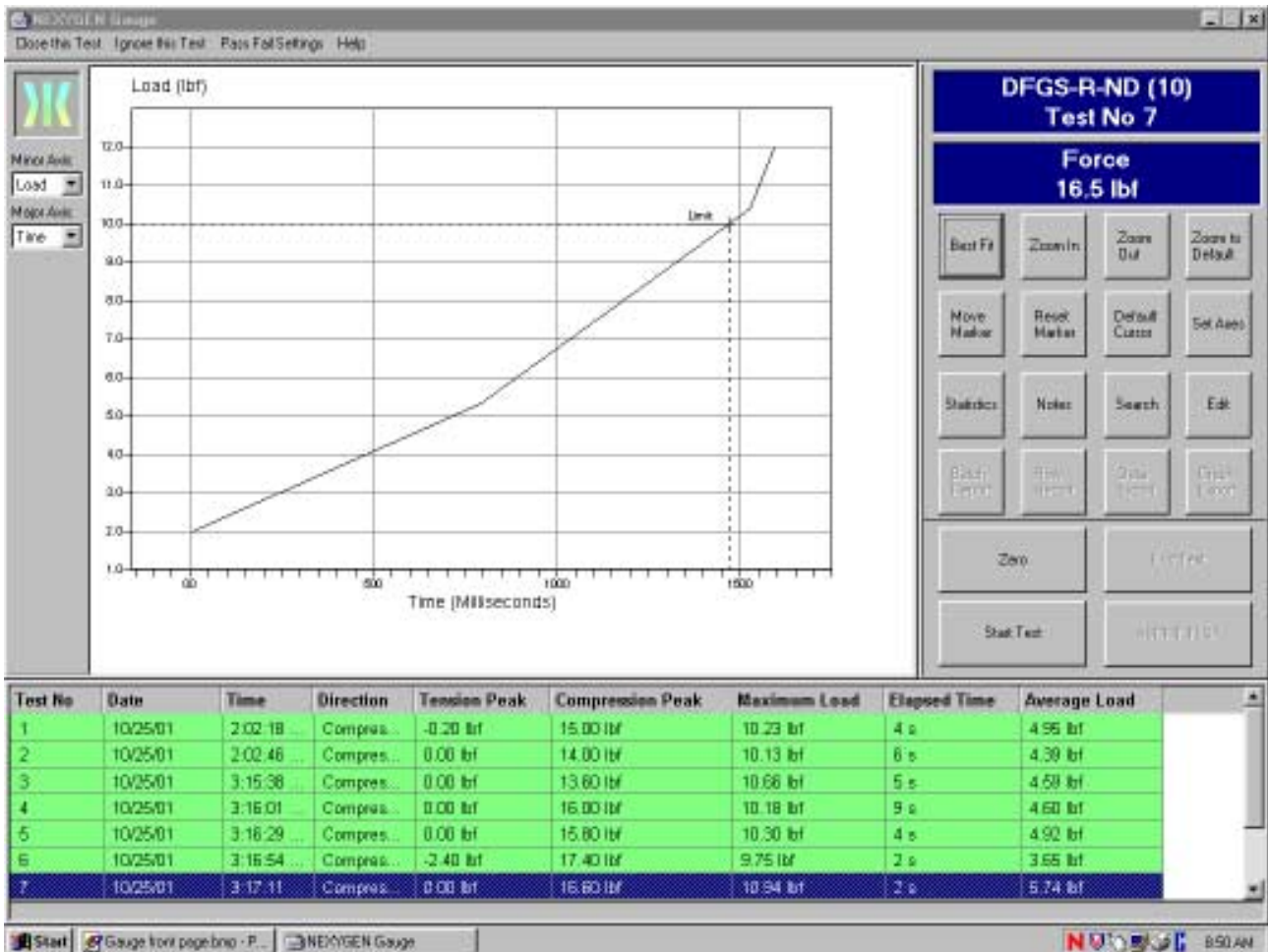
Accessories	Availability	Part No.	Notes
Protective Carrying Case	Standard	SPK-DFGS-032	
Battery Charger, 115V	Standard	SPK-DFGS-028A	Standard with 115V models
Battery Charger, 220V	Standard	SPK-DFGS-028B	Standard with 220V models
Hex Key, 7/64-inch	Standard	SPK-FMG-015	
Operators' Manual	Standard	SPK-DFGS-031	

TEST STAND GAUGE ADAPTER KITS

Test Stand Type	Availability	Part No.	Notes
LTS Series	N/A	N/A	Mounts directly to Test Stand
LTC Series	N/A	N/A	Mounts directly to Test Stand
HTC Series	Optional	HTCK-2	
TT Tester	Optional	NC002582	
LTCM-6 Series	Optional	SPK-FM200-019	Standard with Test Stand
TCM201 Series	Optional	SPK-FM200-019	Standard with Test Stand
TCD200 Series	Optional	SPK-FM200-019	Standard with Test Stand
LFPLUS Series	Optional	SPK/LFM/0005	
LRX Series	N/A	N/A	Not Compatible
LRXPLUS Series	N/A	N/A	Not Compatible
LR5KPLUS Series	N/A	N/A	Not Compatible

GAUGE APPLICATION SOFTWARE

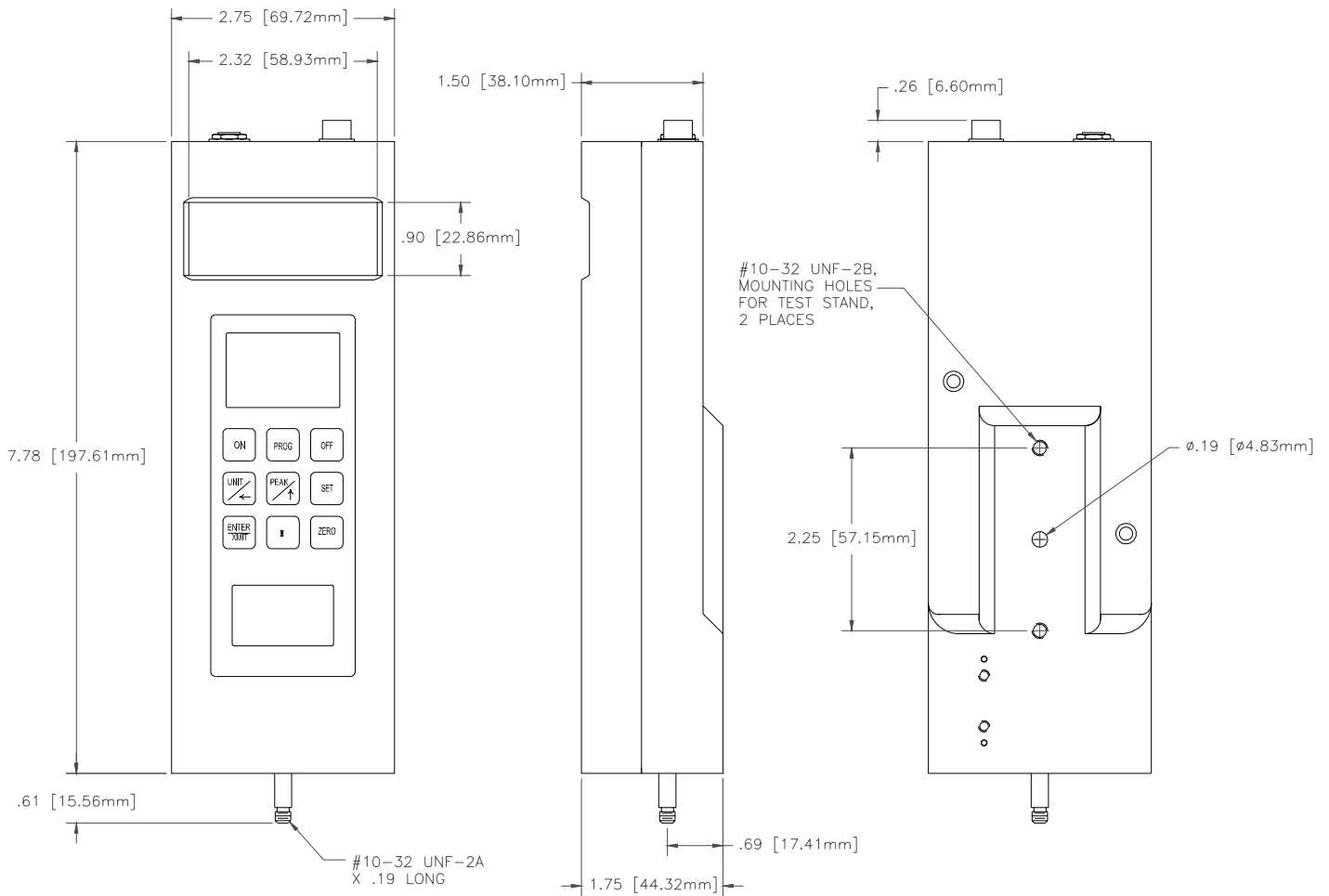
Software	Availability	Part No.	Notes
NEXYGEN GAUGE Software (Single User)	Optional	40/0739	Single User License
NEXYGEN GAUGE Software (5 Pack)	Optional	40/0739/5	5 User License
NEXYGEN GAUGE Software (10 Pack)	Optional	40/0739/10	10 User License



NEXYGEN GAUGE software allows you to collect load measurements from your force gauge and display and analyze results information in both tabular and graphical formats. You can automatically create reports in WORD or EXCEL and define pass/fail conditions. You can change the size of your graph, overlay graphs, add notations, etc.

INTERFACE CABLES

Interface Cables	Availability	Part No.	Notes
Personal Computer, 25-pin D, 6ft (2m)	Optional	NC000652	
Personal Computer, 25-pin D, 10ft (3m)	Optional	NC000652-1	
Personal Computer, 25-pin D, 20ft (7m)	Optional	NC000652-3	
Personal Computer, 9-pin D, 6ft (2m)	Optional	NC000850-1	Require when using NEXYGEN
Personal Computer, 9-pin D, 10ft (3m)	Optional	NC000850-2	Require when using NEXYGEN
MITUTOYO, 10-pin	Optional	NC000654	
MITUTOYO, RS232	Optional	NC000697	
TCM201, 9-pin D	Optional	ENC0125	
TCD200, 9-pin D	Optional	NC000647	



DFGS/AF3 CASE
 FILE NAME: E96-315.DWG



Itin Scale Co., Inc.
 431 Avenue U
 Brooklyn, NY 11223
 PHONE: 718-336-5900
 FAX: 718-627-1313
 EMAIL: sales@itinscales.com
 www.itinscales.com